



## OCEAPOLY® IMPACT TEST

This Impact Test was performed by Seemann's Composites of Gulfport, Mississippi. The test consisted of a 60 Kilograms impactor being dropped from a distance of ten (10) meters onto two panels:

Panel #1 is a 1/4" panel of White fiberglass. As displayed in the photos below, the fiberglass was heavily damaged.

Panel #2 is a 1/4" panel of Black OceaPoly® bonded to 1/4" White fiberglass. As displayed in the photos below, the fiberglass sustaining minimal damage.

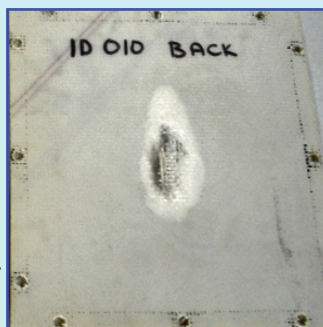
### IMPACT PLATES - BACK

Front side of Plate #1



<-----1/4" White Fiberglass  
Front side after impact

Back side of Plate #1

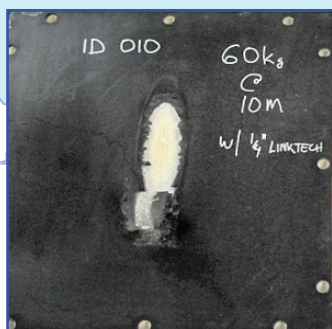


1/4" White Fiberglass ---->  
Back side after impact

Impact created a hole that water would pass through.

### IMPACT PLATES - FRONT

Front side of Plate #2

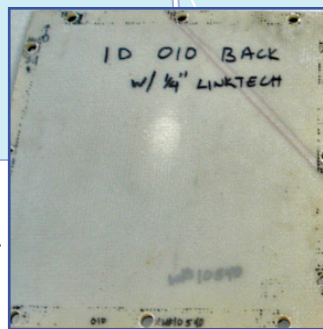


<-----1/4" Black OceaPoly®  
Front side after impact

Bonded To

1/4" White Fiberglass ---->  
Back side after impact

Back side of Plate #2



OceaPoly UHMWPE could be easily repaired with hand held router, Plexus adhesive and a plug of OceaPoly.

Plate was not penetrated on impact and is still water tight.

LinkTech, Inc.

59648 M-43 Highway • Bangor • MI 49013 • 269.427.8297 • [www.linktech-inc.com](http://www.linktech-inc.com)